



GG1100J

CRAWLER EXCAVATOR

The GG1100J mini excavator is powered by a Kubota engine with 15 HP, which ensures excellent power and fuel efficiency. The Japanese quality of the engine guarantees reliability and longevity, making the GG1100J an ideal choice for various construction tasks, both in urban areas and on more challenging terrains.

The GG1100J offers an impressive working range, making it a highly versatile machine. With a digging depth of 1650 mm and a digging height of 2610 mm, the mini excavator is capable of handling various construction tasks, from digging, to leveling the terrain, and working in hard-to-reach areas. The 360° swing radius provides complete freedom of movement, allowing for precise work without the need to reposition the machine. One of the key advantages of the GG1100J is the use of joysticks, which allow for comfortable.

■ Specification

Weight	1050 kg
Bucket width	340 mm
Power	15 HP
Travel Motor	Dali
Bucket Capacity	0,025cbm/120kg
Engine	Japanese Kubota
Main Pump	Wanye Hydraulic
Swing Motor	Dali
Travel Speed	1,5km/h
Extendable Tracks	✓
Swing Arm	✓
Joystick	✓

■ Work Range

Max. Digging Depth	1650 mm
Swing Radius	360°
Max. Blade Digging Depth	255 mm
Max. Digging Height	2610 mm
Max. Digging Radius on the Ground	2890 mm
Max. Blade Height	345 mm

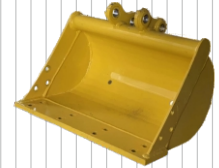
■ Main Dimensions

Length	2770 mm
Height	2100 mm
Width	896 mm
Wheelbase	770 mm
Total Track Length	960 mm

■ Additional equipment



200 mm Bucket



500 mm Bucket



800 mm Bucket



800 mm Hydraulic bucket



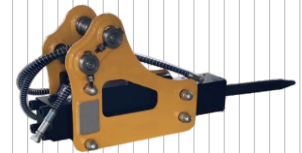
Quick coupler



Wood grapple



Rake



Hydraulic breaker



Earth auger



Ripper tooth

