



# JAPAN 1000J

## CRAWLER EXCAVATOR

The Japan 1000J mini excavator is equipped with a reliable 15 HP Kubota engine, providing high power with low fuel consumption. Thanks to Japanese technology, the Kubota engine is not only efficient but also environmentally friendly, meeting stringent exhaust emission standards. The use of the Parkier main pump and hydraulic pressure of 20 MPa guarantees excellent performance for any job. Cylinders protected against mechanical damage and hoses in the arm ensure the mini excavator is extremely durable and resistant to damage, even in demanding working conditions.

The Japan 1000J mini excavator offers a digging depth of up to 1650 mm and a digging height of up to 2610 mm, making it an ideal tool for various construction tasks such as excavations, leveling, or foundation work. With a maximum blade height of 345 mm and a blade digging depth of 255 mm.

### ■ Specification

Weight	975 kg
Moc	15 KM
Travel motor	LKC
Bucket capacity	0.025 cbm
Engine	Japanese Kubota
Main pump	Parkier
Drive	Two travel speeds
Hydraulic hoses	Cylinders protected against mechanical damage
Oil flow	18L/min
Travel speed	Eaton
Travel motors	Concealed
Pressure	20 Mpa
Extendable Tracks	✓
Swing boom	✓
Joystick	✓
Bucket	380 mm

### ■ Working Range

Max. digging depth	1650 mm
Max. digging radius at ground level	2890 mm
Swing radius	360°
Max. dozer blade digging depth	255 mm
Max. digging height	2610 mm
Max. dozer blade lift height	345 mm

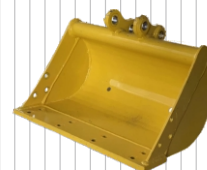
### ■ Main Dimensions

Length	2770 mm
Height	2100 mm
Width	896 mm

### ■ Additional Equipment (for reference)



200 mm Bucket



500 mm Bucket



800 mm Bucket



800 mm Hydraulic bucket



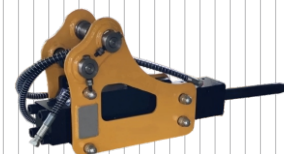
Quick coupler



Wood grapple



Rake



Hydraulic breaker



Earth auger



Ripper tooth

