



GG 1100

CRAWLER EXCAVATOR

The GG1100 is powered by a reliable 15 HP Kubota engine, delivering high performance with low fuel consumption. Japanese Kubota engine technology ensures not only efficiency but also durability, making the GG1100 an ideal choice for intensive construction work, both in urban environments and challenging terrain.

The GG1100 offers an impressive working range: digging depth up to 1650 mm, digging height up to 2610 mm, and a ground-level digging radius of 2890 mm. With a 360° swing radius, the machine is highly maneuverable, enabling precise work in confined spaces without needing to reposition. Additionally, the dozer blade can lift up to 345 mm and dig to a depth of 255 mm, making the GG1100 perfect for land grading tasks.

■ Specification

Weight	1050 kg
Power	15 KM
Travel Motor	Dali
Bucket Capacity	0.025cbm/120kg
Engine	Japanese Kubota
Main Hydraulic Pump	Wanye Hydraulic
Swing Motor	Dali
Travel Speed	1,5km/h
Extendable Tracks	✓
Swing Boom	✓

■ Working Range

Max. Digging Depth	1650 mm
Max. Digging Radius on Ground	2890 mm
Rotation Radius	360°
Max. Blade Digging Depth	255 mm
Max. Digging Height	2610 mm
Max. Blade Lifting Height	345 mm

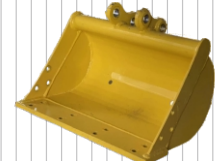
■ Main Dimensions

Length	2770 mm
Height	2100 mm
Total Track Length	960 mm
Width	896 mm
Wheelbase	770 mm

■ Additional Equipment (for reference)



200 mm Bucket



500 mm Bucket



800 mm Bucket



800 mm Hydraulic bucket



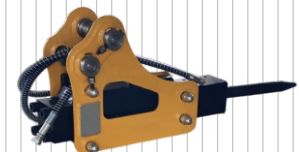
Quick coupler



Wood grapple



Rake



Hydraulic breaker



Earth auger



Ripper tooth

