



GG1050C

CRAWLER EXCAVATOR

The GG1050C mini excavator is equipped with a Koop Euro 5 diesel engine delivering 8.6 kW at 3600 rpm, ensuring high performance while meeting European emission standards. Thanks to this modern engine, the machine operates efficiently and supports environmental protection, making it a suitable choice for construction sites in urban areas with increasingly strict emissions regulations. The cabin version additionally provides protection from weather conditions, dust, and noise, significantly improving operator comfort in all environments.

Thanks to its swing boom and expandable tracks, the GG1050C offers excellent mobility in narrow areas. The ability to adjust track width enhances stability, allowing easier movement over rough terrain. Meanwhile, the cabin improves operator safety and comfort by offering protection from external factors, enabling year-round machine operation.

Specifications

Operating Weight	1100 kg
Bucket Width	380mm
Rated Power	8.6 kw/3600r/min
Hydraulic Pressure	16 Mpa
Travel Motor	Dali
Digging Bucket Capacity	0.025 cbm
Engine	Diesel Koop Euro 5
Main Pump	Wanye Hydraulic
Swing Motor	Dali
Travel Speed	1,5km/h
Expandable Tracks	✓
Swing Boom	✓

Working Range

Maximum Digging Depth	1650 mm
Maximum Dumping Height	1850 mm
Swing Radius	360°
Maximum Dozer Blade Digging Depth	255 mm
Maximum Digging Height	2610 mm
Maximum Digging Radius at Ground Level	2890 mm
Maximum Dozer Blade Lift Height	345 mm

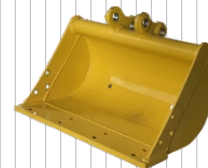
Main Dimensions

Length	2770 mm
Height	2100 mm
Undercarriage Width	896 mm
Width	930 mm
Overall Track Length	1230 mm
Track Width	200 mm
Track Height	320 mm
Ground Clearance (Undercarriage)	132 mm

Additional equipment



200 mm Bucket



500 mm Bucket



800 mm Bucket



800 mm Hydraulic bucket



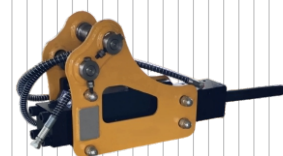
Quick coupler



Wood grapple



Rake



Hydraulic breaker



Earth auger



Ripper tooth

