



GG 900

CRAWLER EXCAVATOR

Weighing just 900 kg, the GG900 mini excavator is lightweight and easy to maneuver, yet robust enough to handle more demanding tasks. With this weight, the machine offers the perfect balance between stability and mobility, enabling effective use in various terrain conditions. It is an excellent choice for work in cities, on small plots of land, or in narrow spaces where larger machines may struggle to navigate.

The mini excavator is powered by a Kubota D722 engine delivering 15 HP at 3600 rpm, providing reliable power for heavy-duty tasks. Kubota engines are synonymous with durability and reliability, making them one of the best choices in the construction machinery industry. With this engine, the GG900 ensures smooth and efficient operation, enabling the execution of complex tasks. Wanye Hydraulic system that operates at a high pressure of 16 Mpa.

■ Specifications

Operating Weight	900 kg
Bucket Width	300 mm
Rated Power	15 HP / 3600 rpm
Hydraulic Pressure	16 mpa
Travel Motor	Dali
Bucket Capacity	0.025 cbm
Engine	Kubota - D722
Main Pump	Wanye Hydraulic
Swing Motor	Dali
Travel Speed	1,5km/h
Expandable Tracks	✓
Swing Boom	✓

■ Working Range

Maximum Digging Depth	1650 mm
Maximum Dumping Height	1850 mm
Swing Radius	360°
Maximum Dozer Blade Digging Depth	255 mm
Maximum Digging Height	2610 mm
Maximum Digging Radius at Ground Level	2890 mm
Maximum Dozer Blade Lift Height	345 mm

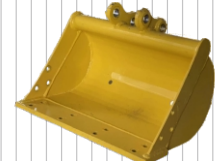
■ Main Dimensions

Length	2770 mm
Height	2100 mm
Undercarriage Width	896 mm
Width	930 mm
Overall Track Length	1230 mm
Track Width	200 mm

■ Additional Equipment (for reference)



200 mm Bucket



500 mm Bucket



800 mm Bucket



800 mm Hydraulic bucket



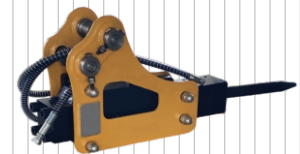
Quick coupler



Wood grapple



Rake



Hydraulic breaker



Earth auger



Ripper tooth

