



GG850C

CRAWLER EXCAVATOR

At the heart of the GG850CAB is the three-cylinder Kubota D722 engine, delivering 15 HP at 3600 rpm. This reliable and fuel-efficient power unit is known for its durability and low fuel consumption, enabling the excavator to handle challenging terrain with ease.

The GG850CAB features a Wanye hydraulic system operating at 16 MPa, ensuring precise control over all boom and attachment functions. Travel and swing motors by Dali support smooth maneuverability, and the full 360° turret rotation allows the operator to perform complex tasks without repositioning the machine. With an overall width of just 930 mm, it easily fits through standard garden gates, narrow paths, and tight areas around buildings. Its total length of 2770 mm and height of 2100 mm allow for easy transport on a small trailer, making it the perfect solution.

■ Specifications

Operating Weight	1000 kg
Bucket Width	300 mm
Rated Power	15 HP / 3600 rpm
Hydraulic Pressure	16 mpa
Travel Motor	Dali
Bucket Capacity	0.025 cbm
Engine	Kubota - D722
Main Pump	Wanye Hydraulic
Swing Motor	Dali
Travel Speed	1,5km/h

■ Working Range

Maximum Digging Depth	1650 mm
Maximum Dumping Height	1850 mm
Swing Radius	360°
Maximum Dozer Blade Digging Depth	255 mm
Maximum Digging Height	2610 mm
Maximum Digging Radius at Ground Level	2890 mm
Maximum Dozer Blade Lift Height	345 mm

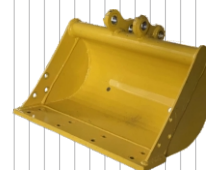
■ Main Dimensions

Length	2770 mm
Height	2100 mm
Undercarriage Width	896 mm
Width	930 mm
Overall Track Length	1230 mm
Track Width	200 mm

■ Additional Equipment (for reference)



200 mm Bucket



500 mm Bucket



800 mm Bucket



800 mm Hydraulic bucket



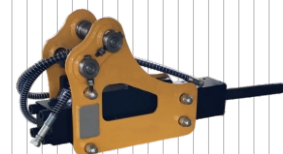
Quick coupler



Wood grapple



Rake



Hydraulic breaker



Earth auger



Ripper tooth

