



# GG850

## CRAWLER EXCAVATOR

At the heart of the GG850 mini excavator is the high-quality Kubota D722 engine with 15 HP. This efficient and economical engine ensures reliable operation even in challenging terrain conditions. With a precisely matched hydraulic system, the machine delivers smooth and fast operation, significantly enhancing work efficiency.

Despite its solid construction, the GG850 maintains compact dimensions – 2770 mm in length, 930 mm in width, and 2100 mm in height. A travel speed of 1.5 km/h allows easy movement across the job site, while the 200 mm track width ensures stability on various surfaces. This makes the GG850 suitable for urban construction areas as well as more challenging ground conditions. Wanye Hydraulic system with a pressure of 16 MPa, ensuring smooth operation.

### ■ Specifications

Operating Weight	850 kg
Bucket Width	300 mm
Rated Power	15 HP / 3600 rpm
Hydraulic Pressure	16 mpa
Travel Motor	Dali
Bucket Capacity	0.025 cbm
Engine	Kubota - D722
Main Pump	Wanye Hydraulic
Swing Motor	Dali
Travel Speed	1,5km/h

### ■ Working Range

Maximum Digging Depth	1650 mm
Maximum Dumping Height	1850 mm
Swing Radius	360°
Maximum Dozer Blade Digging Depth	255 mm
Maximum Digging Height	2610 mm
Maximum Digging Radius at Ground Level	2890 mm
Maximum Dozer Blade Lift Height	345 mm

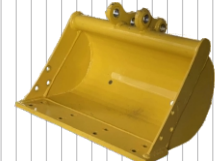
### ■ Main Dimensions

Length	2770 mm
Height	2100 mm
Undercarriage Width	896 mm
Width	930 mm
Overall Track Length	1230 mm
Track Width	200 mm

### ■ Additional Equipment (for reference)



200 mm Bucket



500 mm Bucket



800 mm Bucket



800 mm Hydraulic bucket



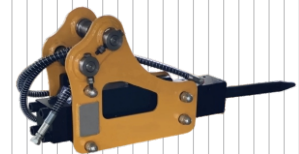
Quick coupler



Wood grapple



Rake



Hydraulic breaker



Earth auger



Ripper tooth

