



GG800NXC

CRAWLER EXCAVATOR

At the heart of the GG800NXC is a modern Gunter Grossmann Diesel engine meeting Euro 5 emission standards, guaranteeing high performance and environmentally friendly operation. Rated power of 8.6 kW at 3600 rpm ensures reliable work in all conditions. The advanced Wayne Hydraulic system with 16 MPa pressure combined with Dali motors provides smooth and dynamic operation, while a travel speed of 1.5 km/h allows easy movement around the work site.

The mini excavator offers an impressive working range – a maximum digging depth of 1650 mm and a digging height of 2610 mm. Thanks to the 360° swing radius, the machine provides full freedom of movement and excellent precision under all conditions. The dumping height of 1850 mm and the increased dozer blade lift height of 345 mm enable effective execution of various earthmoving tasks.

■ Specification

Expandable	Tracks
Movable	Arm
Operating Weight	1000 kg
Bucket Width	380 mm
Rated Power	8.6 kW / 3600 r/min
Hydraulic Pressure	16 mpa
Travel Motor	Dali
Bucket Capacity for Digging	0.025 cbm
Engine	Diesel Euro 5
Main Pump	Wanye Hydraulic
Swing Motor	Dali
Travel Speed	1,5km/h

■ Working Range

Max. Digging Depth	1650 mm
Max. Dumping Height	1850 mm
Swing Radius	360°
Max. Blade Digging Depth	255 mm
Max. Digging Height	2610 mm
Max. Digging Radius on the Ground	2890 mm
Max. Blade Height Increase	345 mm

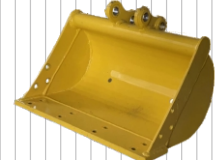
■ Main Dimensions

Length	2770 mm
Height	2100 mm
Chassis Width	896 mm
Width	930 mm
Total Track Length	1230 mm
Track Width	200 mm

■ Additional equipment (for reference)



200 mm Bucket



500 mm Bucket



800 mm Bucket



800 mm Hydraulic bucket



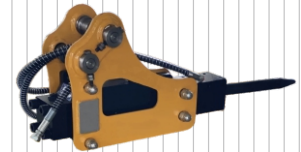
Quick coupler



Wood grapple



Rake



Hydraulic breaker



Earth auger



Ripper tooth

