



GG800NC

CRAWLER EXCAVATOR CABIN

Powered by a Gunter Grossmann Euro 5 Diesel engine delivering 8.6 kW, the GG800NC excavator not only provides sufficient power for the job but also meets stringent emission standards, ensuring environmental friendliness. Equipped with a Wayne hydraulic pump and an operating pressure of 16 MPa, the machine handles every challenge, even in difficult terrain conditions.

The GG800NC excavator offers a maximum digging depth of 1650 mm and a maximum dumping height of 2610 mm, enabling precise work in various conditions. With a dumping height of up to 1850 mm, it is ideal for material loading even in hard-to-reach places. The cab enhances operator comfort and allows work regardless of the weather. Thanks to a 360° swing radius, the GG800NC excavator offers exceptional maneuverability in tight spaces.

■ Specification

Operating weight	1000 kg
Bucket width	300 mm
Rated power	8.6 kW / 3600 rpm
Hydraulic pressure	16 Mpa
Travel motor	Dali
Digging bucket capacity	0.025 cbm
Engine	Diesel Gunter Grossmann Euro 5
Main pump	Wayne Hydraulic
Swing motor	Dali
Travel speed	1,5km/h

■ Working Range

Max. digging depth	1650 mm
Max. dumping height	1850 mm
Swing radius	360°
Max. dozer blade digging depth	255 mm
Max. digging height	2610 mm
Max. digging radius on ground	2890 mm
Max. dozer blade lift height	345 mm

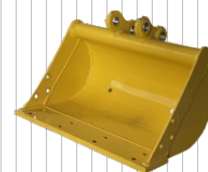
■ Main Dimensions

Length	2770 mm
Height	2100 mm
Chassis width	896 mm
Width	930 mm
Overall track length	1230 mm
Track width	200 mm

■ Additional Equipment (for reference)



200 mm Bucket



500 mm Bucket



800 mm Bucket



800 mm Hydraulic bucket



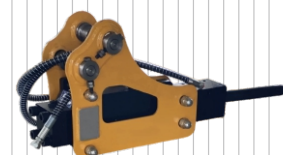
Quick coupler



Wood grapple



Rake



Hydraulic breaker



Earth auger



Ripper tooth

