



# GG1050

## CRAWLER EXCAVATOR

The GG1050 mini excavator is equipped with a Koop Euro 5 diesel engine delivering 8.6 kW at 3600 rpm, ensuring high efficiency while meeting strict European emission standards. This modern engine offers excellent fuel economy and contributes to environmental protection, making it a suitable choice for urban job sites where increasingly strict emissions regulations apply.

With a swing boom and expandable tracks, the GG1050 offers excellent mobility in narrow spaces. The adjustable track width enhances stability, allowing for smoother operation in difficult terrain while ensuring ease of movement and comfort when working in confined areas. The GG1050 is equipped with a Wanye Hydraulic main pump that delivers 16 MPa of hydraulic pressure. This system provides the power and precision needed for all types of digging operations.

### Specifications

Operating Weight	1000 kg
Bucket Width	380mm
Rated Power	8.6 kw/3600r/min
Hydraulic Pressure	16 Mpa
Travel Motor	Dali
Digging Bucket Capacity	0.025 cbm
Engine	Diesel Koop Euro 5
Main Pump	Wanye Hydraulic
Swing Motor	Dali
Travel Speed	1,5km/h
Expandable Tracks	✓
Swing Boom	✓

### Working Range

Maximum Digging Depth	1650 mm
Maximum Dumping Height	1850 mm
Swing Radius	360°
Maximum Dozer Blade Digging Depth	255 mm
Maximum Digging Height	2610 mm
Maximum Digging Radius at Ground Level	2890 mm
Maximum Dozer Blade Lift Height	345 mm

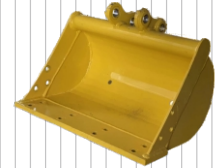
### Main Dimensions

Length	2770 mm
Height	2100 mm
Undercarriage Width	896 mm
Width	930 mm
Overall Track Length	1230 mm
Track Width	200 mm
Track Height	320 mm
Ground Clearance (Undercarriage)	132 mm

### Additional equipment



200 mm Bucket



500 mm Bucket



800 mm Bucket



800 mm Hydraulic bucket



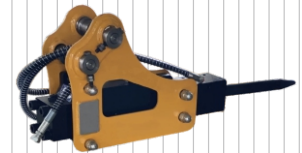
Quick coupler



Wood grapple



Rake



Hydraulic breaker



Earth auger



Ripper tooth

