



# GG 1000

## CRAWLER EXCAVATOR

The GG1000 mini excavator weighs 1000 kg, making it one of the more stable machines in its category, providing an optimal balance between mobility and working power. These parameters allow for easy maneuverability while maintaining sufficient stability for working in tougher conditions. With this weight, the GG1000 excels in narrow construction spaces, small plots of land, or urban renovations where larger machines would struggle to pass.

The machine is equipped with a Japanese Kubota engine with 15 HP, which ensures high reliability and long service life. Kubota engines are renowned for their durability, making them the ideal solution for working in harsh conditions. With this engine, the GG1000 delivers the fluidity and power necessary to efficiently perform various construction tasks, including digging, grading.

### ■ Specification

Weight	1000 kg
Bucket width	340 mm
Power	15 KM
Swing Motor	Dali
Travel Speed	1.5km/h
Bucket Capacity	0.025cbm/120kg
Engine	Japanese Kubota
Main Pump	Wanye Hydraulic
Travel Motor	Dali

### ■ Working Range

Max. Digging Depth	1650 mm
Max. Digging Height	2610 mm
Swing Radius	360°
Max. Digging Radius on the Ground	2890 mm
Max. Blade Height (Dozer Blade)	345 mm

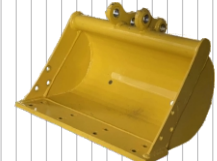
### ■ Main Dimensions

Length	2770 mm
Height	2100 mm
Total Track Length	960 mm
Width	896 mm
Wheelbase	770 mm

### ■ Additional Equipment (for reference)



200 mm Bucket



500 mm Bucket



800 mm Bucket



800 mm Hydraulic bucket



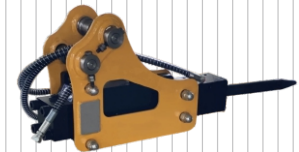
Quick coupler



Wood grapple



Rake



Hydraulic breaker



Earth auger



Ripper tooth

