



GT2000J

CRAWLER EXCAVATOR

The GT2000J crawler excavator is a robust and versatile machine with an operating weight of 2,200 kg, ideally suited for earthmoving, construction, and installation work. Thanks to its stable design and precise hydraulic system, it performs reliably both on large construction sites and in confined working areas. The machine is powered by a reliable Yanmar 3TNV80F engine with an output of 15.2 kW, ensuring economical operation, long service life, and consistent performance. The excavator is also capable of operating on steep terrain, with a maximum climbing angle of 35°.

The hydraulic system operates at a pressure of 18 MPa, providing precise and efficient working movements. The bucket digging force is 14 kN, while the arm digging force is 10 kN, enabling efficient excavation in various soil conditions. The GT2000J offers a maximum digging depth of 2,050 mm, a vertical digging depth of up to 1,955 mm, and a dumping height of up to 2,385 mm.

■ Specification

Model		GT 2000J
Operating Weight	kg	2200
Engine Type		Yanmar Engine 3TNV80F
Rated Power	kW	15,2
Rotation Speed	rpm	10–12
Maximum Bucket Digging Force	kN	14
Maximum Arm Digging Force	kN	10
Hydraulic System Pressure	Mpa	18
Maximum Climbing Angle	°	35
Travel motor		Double speed
Air conditioning		Equipped
Swing arm ramie		Equipped
Extendable tracks		Equipped
Joystick		Equipped

■ Scope of work

Standard Bucket Capacity	m. ³	0,06
Tail Swing Radius	mm	1125
Minimum Digging Height	mm	3365
Maximum Dumping Height	mm	2385
Maximum Digging Depth	mm	2050
Maximum Vertical Digging Depth	mm	1955
Maximum Digging Radius	m. ³	3860
Minimum Swing Radius	mm	1125
Dozer Blade Ground Clearance	mm	230
Maximum Dozer Blade Digging Depth	mm	275
Swing Arm Angle Left	°	75
Swing Arm Angle Right	°	45

■ Dimensions

Cabin Height	mm	2270
Wheelbase	mm	1230
Track Width	mm	820
Minimum Ground Clearance	mm	210

■ Additional equipment



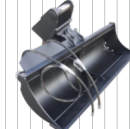
300 mm Bucket



600 mm bucket



1000 mm bucket



Hydraulic bucket 1000mm



Quick coupler



Wood grapple



Rake



Hydraulic breaker



Earth auger



Ripper tooth

