



GG010T

TELESCOPIC LOADER

The GG010T model is equipped with a Yunnei Euro 5 engine, which meets the latest emissions standards, ensuring compliance with current environmental regulations. The 25 HP diesel engine with a rated speed of 2400 rpm provides the necessary power for performing work tasks. Combined with the four-wheel drive system, the machine offers excellent traction and stability in challenging terrain, enabling precise operation in various working conditions.

The GG010T is equipped with a bucket with a capacity of 0.4 ↔ 0.5 m³, allowing for efficient material handling. The bucket width is 1550 mm, ensuring convenient loading and unloading. The maximum breakout force is 28 kN, allowing for easy separation and movement of tough materials. With a rated load capacity of 1000 kg and an operating weight of 2800 kg.

■ Specification

Engine Type	Yunnei Euro 5 - inline, liquid-cooled, four-cylinder diesel engine
Rated Speed	2400 rpm
System Pressure	10 Mpa
Parking Brake	Manually operated
Wheelbase	2170 mm
Rated Power	25 HP
Steering System	Fully hydraulic
Brakes	Four-wheel hydraulic brake
Tires	10-16,5
Track	1285 mm

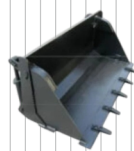
■ Working Range

Bucket Capacity	0.4 ↔ 0,5 m ³
Max. Breakout Force	28 KN
Operating Weight	2800 kg
Minimum Turning Radius	4600 mm
Bucket Width	1550 mm
Rated Load Capacity	1000 kg
Drive	Four-wheel drive
Maximum Lifting height	4131 mm

■ Main Dimensions

Total Length (bucket on the ground)	4600 mm
Total Height	2400 mm
Total Width	1550 mm

■ Additional equipment (for reference)



4-in-1 Bucket



Grapple (Crocodile-type)



Pallet Forks



Auger



Bale Grab



Bucket with grapple



Mower



Sweeper

